

omniCHROMA®
&
omniCHROMA Flow

Lookbook 3

*A guide of case images demonstrating the
shade-matching and restorative capabilities*

Table of Contents

Technique Case Studies _____ 5-10

ANTERIOR

Class III _____ 13

Class IV _____ 14-17

Class V _____ 19-21

POSTERIOR

Class I/II _____ 22-23

VENEERS _____ 25-26

DIASTEMA _____ 27-29

LONGEVITY _____ 30-32

WHITENING _____ 33

Since its launch in 2019, OMNICHROMA continues to deliver
esthetic, durable, and reliable results.

Tokuyama Dental's newest release, OMNICHROMA Flow, gives
you the same dependable results, in a flowable consistency.

Every Shade. One Choice.

OMNICHROMA®





“OMNICHROMA has proven its ability to match shades from light to dark. A significant percentage of my patient population are seniors, with teeth darker than the standard “A2”. OMNICHROMA has eliminated the shade-matching step, and has eliminated the need to blend shades to try to duplicate Mother Nature.”

-Dr. Robert Rosenfeld, Westwood, NJ

72-year-old male, with **existing cervical Class V composite** restoration, on Tooth #21, was found to have recurrent decay. Replacement of the restoration was recommended and completed with **OMNICHROMA Flow** and **OMNICHROMA**.



1. Recurrent decay around existing composite restoration



2. Approximate shade match – Vita A3



3. Isolation with rubber dam

Technique Case Study

Class V



4. After excavation of caries



5. Selective etch of enamel with 37% phosphoric acid



6. After placement of adhesive and light polymerization, followed by the placement and polymerization of **OMNICHROMA Flow**



7. Placement of **OMNICHROMA** (prior to adaptation and light polymerization, demonstrating how pre-cured appearance doesn't at all match surroundings!)



8. After placement, adaptation, and crude shaping of **OMNICHROMA**



9. Finished with ultrafine flame-shaped diamond, multi-fluted carbide finishing burs, and polishing

Technique Case Study

Amalgam Replacement

35-year-old male wanted to **replace old amalgam** restoration with composite. **Tooth #30** OB restoration. **OMNICHROMA BLOCKER Flow** was used to mask the dark staining, with **OMNICHROMA Flow** to finish.



1. Old amalgam failing on Tooth #30, tooth shade A2



2. After rubber dam placement



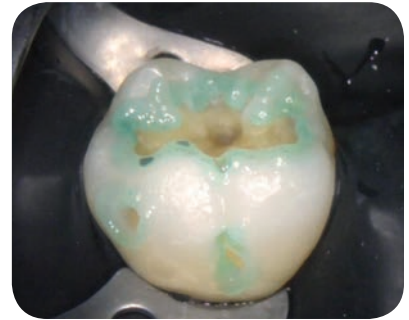
3. Caries and amalgam stains



4. Side view



5. Final cavity preparation



6. Etching

Technique Case Study

Amalgam Replacement



7. Placement of
OMNICHROMA BLOCKER Flow



8. Final placement of
OMNICHROMA Flow



9. Post-operation

“

Did you know?

OMNICHROMA and OMNICHROMA Flow will continue to shade-match even through a shift in tooth color! This is thanks to its Smart Chromatic Technology, a science based on structural color.

”

“

I always recommend a nice bevel because it allows for a more seamless and natural looking blend.

– Dr. James Chae

”

“

Placing the vertical finish lines at the facial proximal line angles and making the horizontal finish line curved rather than straight, will help the restorative material blend and disappear with the natural tooth surface.

– Dr. Robert Lowe

”

“

BLOCKER as dentin shade: Use OMNICHROMA as a thin lingual shelf (~0.25mm), then BLOCKER can act as an artificial dentin and sculpted to create mamelons. Then, if desired, Estelite Color (Tokuyama Dental) resins can be used to enhance internal characterization(s) such as white calcifications, craze lines, translucencies, etc. Finish with a final layer of OMNICHROMA on top.

– Dr. Kevin Brown

”

“

Having a proper bonding procedure is vital for optimum shade-matching results!

”



“OMNICHROMA is one of the easiest composites that I have ever had the opportunity to work with. It goes on easy, condenses easy with limited slumping, holds its shape, polishes to high lustre, and the colour match is second to none with only one universal shade for every case regardless of tooth shade. Now I can stock a few or many syringes or compules and be sure of using it all and not wasting so much unused composite. I highly recommend OMNICHROMA, you will be happy you made the switch.”

-Dr. Migara Weerasinghe, Markham, ON

Courtesy of Dr. James H. Peyton, Bakersfield, CA



Pre-operative Image



Post-operative Image

OMNICHROMA was used on **Tooth #8** for DF **Class III & Class V**, **Tooth #8** Mesial **Class III**, **Tooth #9** Mesial **Class III**, & **Tooth #9** Facial **Class V**.

Courtesy of Dr. Alina Barbeito, Miami, FL



Pre-operative Image



Post-operative Image

18-year-old female patient with a traumatic **Class IV** fracture on **Tooth #9**. **OMNICHROMA BLOCKER** and **OMNICHROMA** were placed and light-cured in increments.

Courtesy of Dr. James Peyton, Bakersfield, CA



Pre-operative Image



Post-operative Image

67-year-old female patient had a composite filling come out. The **Class IV, Tooth #7** Mesial-Incisal, was restored with **OMNICHROMA BLOCKER** and **OMNICHROMA**.

Courtesy of Dr. Sable Muntean, University City, MO



Pre-operative Image



Post-operative Image

32-year-old male in a bike accident **chipped Tooth #9**. Lingual layer built using **Estelite Omega DA2**, followed by a layer of DA1 to mimic dentin. **OMNICHROMA Flow** was applied as the final layer to the restored area and over the long bevel created during tooth preparation.

Courtesy of Dr. James Peyton, Bakersfield, CA



Pre-operative Image



Post-operative Image

A 56-year-old female patient complained of a chipped upper right central incisor (**Tooth #8**). The material selected for this procedure was **OMNICHROMA BLOCKER Flow** and **OMNICHROMA Flow**.



“OMNICHROMA BLOCKER Flow is a must have in every composite arsenal. It effortlessly covers dark dentin, discolorations and allows for excellent aesthetics. Combining OMNICHROMA BLOCKER Flow with the original OMNICHROMA or OMNICHROMA Flow makes restorations very simple.”

-Dr. Ian Shuman, Baltimore, MD

Courtesy of Dr. Robert Rosenfeld, Westwood, NJ



Pre-operative Image



Post-operative Image

72-year-old male, with **existing Class V composite** restoration, on **Tooth #21**, was found to have recurrent decay. Replacement of the restoration was completed with **OMNICHROMA Flow** and **OMNICHROMA**.

Courtesy of Dr. Upendra Patel, Sacramento, CA



Pre-operative Image



Post-operative Image

51-year-old female with **decay and stain at the gum line [Tooth #7]**. Repaired with **OMNICHROMA BLOCKER Flow** then **OMNICHROMA Flow**.

Courtesy of Dr. James Chae, Diamond Bar, CA



Pre-operative Image



Post-operative Image

52-year old female with caries presented on the cervical areas of the teeth. **Class V**, on **Teeth #24 & 25**. **OMNICHROMA** and **Tokuyama Universal Bond** were used to restore the teeth.



Courtesy of Dr. Kevin Brown, Bellevue, WA



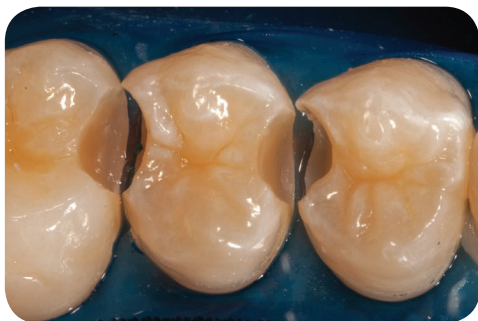
Pre-operative Image



Post-operative Image

Tooth #14 MO amalgam placed 20 years ago. **OMNICHROMA BLOCKER** was used to mask the dark staining, and **OMNICHROMA** was placed on top.

Courtesy of Dr. Kevin Brown, Bellevue, WA



Pre-operative Image



Post-operative Image

Teeth #18 and #19 presented with **small to moderate sized caries** on the occlusal surfaces. After the decay was removed, **OMNICHROMA Flow** was used. I used a fine grit diamond bur to create occlusal anatomy and then polished.



“ I use [OMNICHROMA products] in my practice almost every day to provide direct esthetic restorations, for repairs of composite and porcelain and for mock ups for patients who want to envision the result before embarking upon treatment. Thank you for such a useful product.”

-Dr. Ross Nash, Huntersville, NC

Courtesy of Dr. Ross Nash, Huntersville, NC



Pre-operative Image



Post-operative Image

16-year-old male had **spaces after orthodontic treatment**. **OMNICHROMA BLOCKER** was used in the interproximal areas and **OMNICHROMA** for the facial aspects of six direct composite veneers for **Teeth #6-11**. The direct composite veneers were placed with no preparation.

Courtesy of Dr. Ross Nash, Huntersville, NC



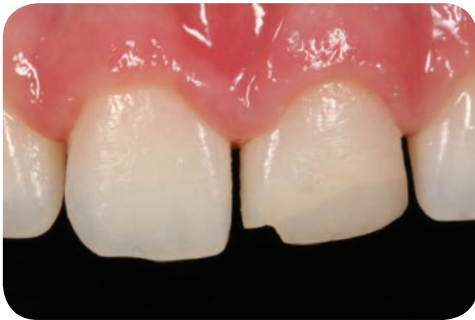
Pre-operative Image



Post-operative Image

62-year-old male presented with **chipped central incisors** and a **diastema**. **OMNICHROMA BLOCKER** and **OMNICHROMA** were used to place **direct veneers** for both teeth.

Courtesy of Dr. Kevin Brown, Bellevue, WA



Pre-operative Image



Post-operative Image

Patient presented with **post-orthodontic residual spacing** intentionally left for composite bonding after treatment. **Tooth #9** was prepped with a long bevel along facial surface to allow for better bonding strength and color blending. Lingual shelf established on **Teeth #7-10** using **OMNICHROMA** and silicone putty index. **OMNICHROMA BLOCKER** was used to recreate dentin with a thin layer of **OMNICHROMA** placed on top. **Tokuyama Estelite Colors** were used to create subtle internal characterization. **OMNICHROMA** was layered to full contour.

Diastema

Courtesy of Dr. Kevin Brown, Bellevue, WA



Pre-operative Image



Post-operative Image

30-year-old male with **moderate diastema** between maxillary central incisors, using **OMNICHROMA** to restore.

Courtesy of Dr. Kevin Brown, Bellevue, WA



Pre-operative Image



Post-operative Image

25-year-old female's **small diastema** between maxillary central incisors was restored with **OMNICHROMA Flow**.

Long-Term Diastema Performance

Courtesy of Dr. Kevin Brown, Bellevue, WA



Pre-operative Image



Post-operative Image



18-month Revisit

Patient had orthodontics in her youth, but stopped wearing a retainer, resulting in a **diastema**. She elected not to do Invisalign, and chose direct composite bonding on **Teeth #8-9**. **Tokuyama Universal Bond**, a putty matrix, and **OMNICHROMA** were used.

Courtesy of Dr. James Peyton, Bakersfield, CA



Pre-operative Image



Post-operative Image



15-month Revisit

Patient with **Class V, Teeth #4-6**, using **OMNICHROMA**.

Long-Term Class II Performance

Courtesy of Dr. James Chae, Diamond Bar, CA



Pre-operative Image



Post-operative Image



15-month Revisit

45-year-old female, **Tooth #19**, had an **old amalgam** restoration on the occlusal as well as sealant on the occlusal and buccal surfaces. OB restoration was done using **Tokuyama Universal Bond** and **OMNICHROMA**. Restoration looks very natural and continues to shade-match at 15-month revisit.

Courtesy of Dr. Robert Rosenfeld, Westwood, NJ



Pre-operative Image



7.5-month Revisit

Patient consistently used OTC bleaching agents for 3 years resulting in a **mismatched Class IV** on upper left central incisor. **OMNICHROMA BLOCKER & OMNICHROMA** were used to replace the old restoration. **7.5 months** and **29 additional bleaching strips** later, **OMNICHROMA** continued to shade-match.

Tokuyama Dental America would like to thank the doctors who have contributed their case images and testimonials to this Lookbook.

Thank you for trusting our products.



Innovating Tomorrow's Dentistry, Today.™

Every Shade. One Choice.

omniCHROMA One-Shade Universal Composite



omniCHROMA *Flow* One-Shade Flowable Composite



New Products:
Materials
Category

With its award-winning technology and dependable results, OMNICHROMA products are a one-shade composite system that you can rely on.



+1 (877) 378-3548 | [Tokuyama-us.com](https://www.tokuyama-us.com)