

# THE PERFECT MATCH

*With the addition of OMNICHROMA Flow BULK, Tokuyama's OMNICHROMA family of single-shade composites meets all your restorative needs, giving patients the strong, beautiful restorations they're after while saving chair time and reducing inventory.*



# One-Shade Convenience in a Bulk Fill Composite

*The OMNICHROMA family of products—including OMNICHROMA, OMNICHROMA Flow, and the new OMNICHROMA Flow BULK—offers clinicians greater flexibility to streamline their restorative procedures thanks to the Smart Chromatic Technology that enables single-shade color matching.*

**F**inding the right shade for a composite restoration can be a time-consuming and frustrating process. Most composites come in multiple shades and translucencies, so even after you determine which one you need for the most esthetic result, you have to sift through your inventory to find it. Tokuyama set out years ago to address this pain point with resin-based composites that feature the wide color-matching concept, starting with Estelite Sigma Quick in 2007.

More recently, Tokuyama revolutionized restorative dentistry with the OMNICHROMA family—the first complete line of single-shade products. The OMNICHROMA universal composite, OMNICHROMA Flow, and the new OMNICHROMA Flow BULK all use Smart Chromatic Technology to match the 16 VITA classical shades. This allows dentists to reduce the amount of inventory they keep on hand and shorten chair time because there's no longer a need for shade matching.

OMNICHROMA Flow BULK completes the product line, building on the success of the first two products and providing clinicians with a single-shade bulk fill option. It can be placed in increments of 3.5 mm, eliminating the need for

multiple composite layers and saving even more time. Like the Estelite series, this strong, one-shade bulk fill features spherical fillers that result in excellent polishability, gloss retention, and wear resistance. So, happy patients walk out of your office with beautiful, long-lasting restorations in less time while saving the practice money once wasted on unused composite shades.

Dr. James Chae, who practices in Diamond Bar, CA, has relied on Tokuyama products for about 15 years. He first tried OMNICHROMA Flow BULK about six months ago and found that the material blends beautifully and is easy to work with.

"It flows nicely and has a nice

polishability," he said. "I've used it on darker teeth and lighter teeth, and it always matches. Despite being a low-viscosity bulk fill, it feels strong when cured. It is not a thin, weak material."

OMNICHROMA Flow BULK offers a variety of benefits for both clinicians and patients, featuring strong physical and mechanical properties along with its shade-matching capability. It can be used for direct anterior and posterior restorations, as a cavity base or liner, for blocking out cavity undercuts before fabricating indirect restorations, and to repair porcelain or composite.

With the addition of this material to the OMNICHROMA family, all



direct restorative needs are covered within the same composite system.

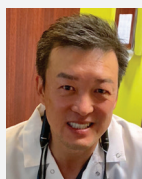
### The Magic of the Match

OMNICHROMA materials are the first to leverage structural color technology in composite dentistry for color matching. Smart Chromatic Technology is the secret behind their shade-matching capabilities, which is achieved through uniformly

sized 260-nm supra-nano spherical fillers. Instead of relying on translucency alone to shade-match, these fillers generate color reflecting the shade of the surrounding teeth.

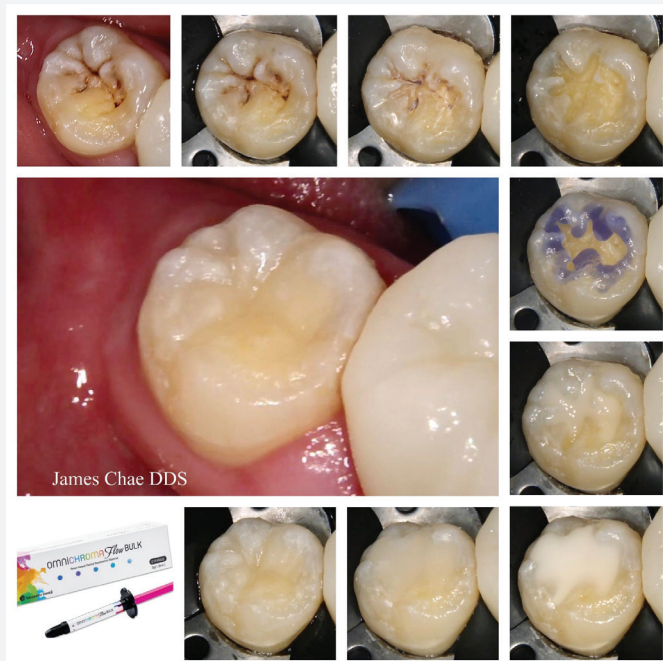
Using this technology, OMNICHROMA Flow BULK can shade-match any tooth color from A1 to D4 for all cases of direct anterior and posterior restorations without a need for a capping layer.

Though he was skeptical at first, the promise of simplified shade matching is what motivated Dr. Scott Waletzko to try OMNICHROMA products a few years ago at his practice in Oak Harbor, WA. Impressed with the results, he is now also using the new bulk fill option, which he said "provides the practicality of a bulk fill and the esthetics of a traditional layered composite." Describing the OMNICHROMA



## The Proof Is in the Pictures

For years, James Chae, DDS, has enjoyed the clinical and practice benefits of single-shade composites in the OMNICHROMA family. He recently documented these cases using the latest addition, OMNICHROMA Flow BULK.



### Case 1: Using OMNICHROMA Flow BULK without BLOCKER for a Class I Restoration

A 37-year-old male presented with occlusal caries. After a clean and neat cavity preparation, a Class I restoration was placed in two increments to seal all the margins on tooth No. 31 using OMNICHROMA Flow BULK, matching shade A3.5. The occlusal anatomy was created using a flame-shaped diamond bur.



### Case 2: Using OMNICHROMA Flow BULK with BLOCKER for a Class I Restoration

A 69-year-old patient presented with recurrent caries under amalgam on tooth No. 32. The Class I restoration was completed with OMNICHROMA Flow BULK matching shade A3. OMNICHROMA BLOCKER Flow was also used. This supplementary material masks slight staining or metal color to reconstruct a highly opaque tooth. It also can be used as a thin layer at the lingual cavity wall of extensive Class III and IV restorations when there is limited surrounding dentition.

## OMNICHROMA Flow BULK features:

- Smart Chromatic Technology allows for one-shade color matching that covers all 16 VITA shades
- High polishability
- High stain resistance
- Low polymerization shrinkage
- High flowability
- Low viscosity
- Radiopacity
- Can be placed in 3.5-mm increments, eliminating the need for multiple composite layers
- Easy handling
- Excellent cavity adaptation
- High flexural and compressive strength



"It gives you that feeling of satisfaction when you're done, especially when the patient says, 'Wow, that was fast!'"

Scott Waletzko, DDS

family as a "place and forget" style of shade matching, he said it saves time and reduces stress for both clinicians and patients, as all are confident the color will blend beautifully.

"Instead of having to stock every shade possible, I've found I can trust OMNICHROMA to cover most shades just as well as if I were using a shade guide and keeping multiple brands clogging up a drawer," Dr. Waletzko said. "And what kind of surprised me is the material starts out very opaque, so you can see where you're placing it. It doesn't immediately blend, but after curing, the material takes on the characteristics of the adjacent tooth structure."

If he's dealing with stains or dark areas, Dr. Waletzko adds OMNICHROMA BLOCKER to hide them, then places OMNICHROMA on top. That allows him to "tap into the material's almost magical ability" to shade-match.

Dr. Chae noted that it can be difficult to shade-match in some cases, and trying to find the exact color can eat up time as the clinician and assistant debate over the options. OMNICHROMA Flow BULK and the other products in the family address this problem, simplifying the process while achieving the most esthetic results.

"OMNICHROMA Flow BULK is the first bulk fill material that is chameleon," said Dr. Richard Creaghe, who's been using OMNICHROMA Flow BULK for several months at his practice in San Rafael, CA. "It takes the shade of the tooth you're putting it in, so instead of having 19 different shades in the refrigerator, you have one."

### Restore with Greater Efficiency

While eliminating the need to shade-match is a time saver, clinicians noted there are other ways

OMNICHROMA Flow BULK improves efficiencies. For example, instead of placing composite in increments, the flowable can be placed and cured in one layer. "You don't waste time adding the material in increments," Dr. Creaghe said. "You can fill from the gingival floor up to the occlusal table in one flow and then cure it."

With other products, Dr. Creaghe always had to shape and grind the material down to fit the contour of the tooth. The more flowable material allows him to add a little more material if the contour isn't right and then cure it. There's little to no shaping and finishing required, further enhancing efficiencies.

"I haven't had any issues with placing the material at once with basic Class I and Class V restorations. It has great adaptability," Dr. Waletzko said. "It gives you that feeling of satisfaction when you're done, especially when the patient says, 'Wow, that was fast!' And then peeks in the mirror and is thrilled with the result."

### Better Inventory Management

For Dr. Creaghe, these single-shade products reduce inventory, so he doesn't have to order and carry nearly as many materials as before. This not only streamlines inventory, it saves a significant amount of money.

"A tube of syringe can cost \$60 to \$100 and has an expiration date," he said. "If I'm buying 19 or 20 tubes that are various shades versus one tube that I'll use before the expiration date, I'm saving hundreds if not thousands of dollars in dental materials."

Ordering also becomes simpler, Dr. Creaghe said. Instead of going through the form and choosing multiple shades, trying to determine

how many of each you might need, you know you'll have all the shades covered with just one material.

### One Product, Many Benefits

OMNICHROMA Flow BULK offers many advantages that help clinicians provide better dentistry. For example, the material features excellent cavity adaptation, high flexural and compressive strength, easy and fast polishability, and low shrinkage.

The low-viscosity composite also has high flowability, making it easy to use for bulk filling applications.

"For cases with very dark teeth or small grooves, I use the flowable instead of the paste. It works well in small spaces. It's a good combination of the paste and the flow. That's how it feels when I adjust the material," Dr. Chae said. "And there's also less sensitivity for patients because the material can flow into the grooves. Pastes can be very technique sensitive. You have to apply in small increments into the grooves without creating voids and sensitivity. This is less technique sensitive."

Dr. Waletzko noted that the material also blends well on grooved anatomy, which are high-risk areas for the dreaded white line to appear after curing. He hasn't run into that problem with OMNICHROMA Flow BULK, ensuring his patients leave with an esthetic restoration.

### A Company You Can Trust

Tokuyama has been a trusted partner for Dr. Chae for years, and he knows any new release from the manufacturer has many years of research and development behind it. As with the other Tokuyama products he uses, Dr. Chae has achieved great results with OMNICHROMA Flow BULK, saving time and money while allowing him to provide patients with beautiful, long-lasting restorations.

Dr. Creaghe has enjoyed similar success with the manufacturer. "They're innovators," he said. "They came up with

## All in the Family

With the launch of OMNICHROMA Flow BULK, the OMNICHROMA composite family offers clinicians a complete direct restorative system—with 3 viscosities to choose from and similar esthetic, physical, and mechanical properties.



**OMNICHROMA** provides the ability to sculpt and create beautiful anatomy and a seamless restoration, whether for Class III, Class IV, diastema, or veneer. Its shade-matching abilities, glossiness, and shine make it an ideal product for the smile zone.

**OMNICHROMA Flow** allows you to do the same but, due to its more flowable nature (medium viscosity), is convenient to use in Class V and II where preps are 2 mm or less. It can also be used as a base or liner and for repairing porcelain or composite.

**OMNICHROMA Flow BULK** offers a low-viscosity, high-flow option for deeper restorations placed in 3.5-mm increments. This allows for quicker treatment and helps overcome the challenges of voids and lack of visibility with deeper Class I cases. Another good use is blocking out undercuts before fabricating indirect restorations.

**OMNICHROMA BLOCKER & OMNICHROMA BLOCKER Flow** are supplemental products that can be used interchangeably as opaquing material to mask discoloration, stains, or build a lingual shelf in cases where not enough tooth structure is present, ensuring optimal shade matching where needed.

## What DPS evaluators are saying about OMNICHROMA Flow BULK:



"I found myself specifically asking my assistant for OMNICHROMA Flow BULK over other composites in my inventory."  
**Dr. David Fine**



"I liked the flowability and the marginal adaptability."  
**Dr. Felipe Falcao**



"I liked the ability to see exactly where I placed the material as it starts out very opaque prior to polymerization."  
**Dr. Roger Urlaub**



"We loved the one shade; it gives us an easy solution to get the right shade match."  
**Dr. Reena Gupta**

OMNICHROMA and changed the tooth-colored filling-material world. They don't have a competitor in sight. They have

reasonably priced, top-shelf products, and they come out with innovations that no other manufacturer has."



# Additional Resources

---



CONNECT WITH TOKUYAMA